

OUTER SPACE ZONES
 SUZ - Superuniverse Zone
 OSZ - Outer Space Zones
 - Regular Galaxies
 - Quatrain Galaxies
 - Absolutum Galaxies

SUPERUNIVERSE ZONES
 - Major Sector Complex
 - Minor Sector
 - Local Universe



URANTIA AND PATTERN

THE PLANETARY JURISDICTIONS

Following the Master Universe Pattern, Urantia has 4 primary jurisdictions:

- 1) Soil (local)
- 2) Land (national)
- 3) Sea (international)
- 4) Air (global)

LOCAL UNIVERSE AND PATTERN

THE NEBADON JURISDICTIONS

Also following the Master Universe Pattern, Nebadon has 4 primary jurisdictions:

- 1) Mansion Worlds
- 2) Local Systems
- 3) Constellations
- 4) Salvington HQ

SUPERUNIVERSE AND PATTERN

THE SUPERUNIVERSE ZONE

The seven Superuniverses (making the Superuniverse Zone) and all the creations they contain are the embryonic developments of the Master Universe. It does not operate independently and relies on God the Sevenfold for its lifeline, which traces back through the Central Universe of Havona (current home of the Supreme Being) and all the way to the Isle of Paradise and the Paradise Deities.

THE ORVONTON JURISDICTIONS

- 1) Local Universes
- 2) Minor Sectors
- 3) Major Sectors
- 4) Uversa HQ

MASTER UNIVERSE AND PATTERN

THE OUTER SPACE ZONE

Discloses the primary Master Universe Pattern for jurisdictions as 4 Outer Space Zones.

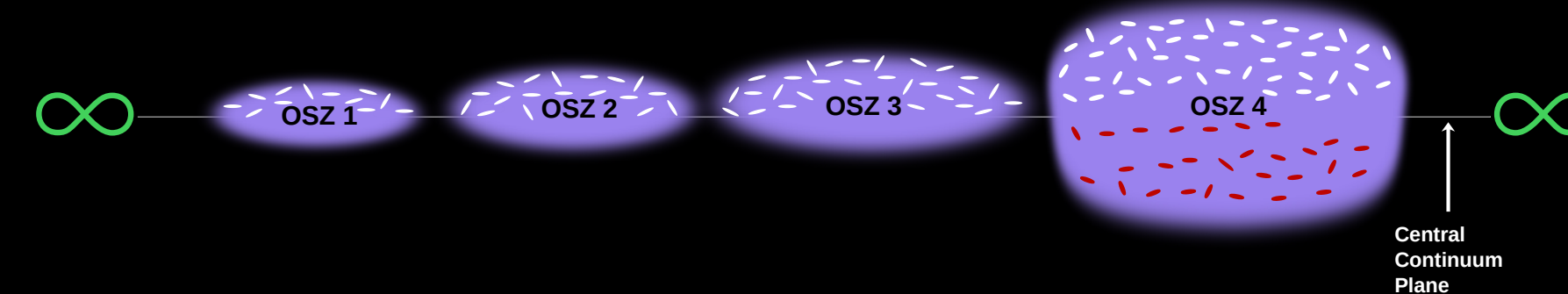
JURISDICTION PATTERN of the MASTER UNIVERSE

| | Man | Urantia | Local Universe | Superuniverse | Master Universe |
|---|-----------|---------|-------------------|------------------|--------------------|
| 1 | Infancy | Soil | Mansion Worlds | Local Universes | Outer Space Zone 1 |
| 2 | Childhood | Land | Local Systems | Minor Sectors | Outer Space Zone 2 |
| 3 | Teenhood | Sea | Constellations | Major Sectors | Outer Space Zone 3 |
| 4 | Adulthood | Air | Local Universe HQ | Superuniverse HQ | Outer Space Zone 4 |

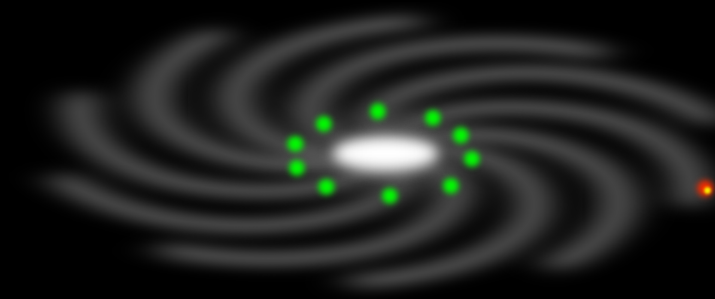
JURISDICTIONAL PATTERN AND DIMENSIONS

The primary Master Universe segments in time and space (Superuniverses and Outer Space) are divided into jurisdictions. Below is a presentation of the various universe levels as they equate to the four primary Master Universe jurisdictions (the 4 Outer Space Zones) as they are encountered in progressively smaller universe pattern expressions.

The Master Universe has 4 primary physical space jurisdictions designed on a planar 2 dimensional elliptical model. Refer to diagram: OVERVIEW OF THE MASTER UNIVERSE for additional details about the elliptical model.

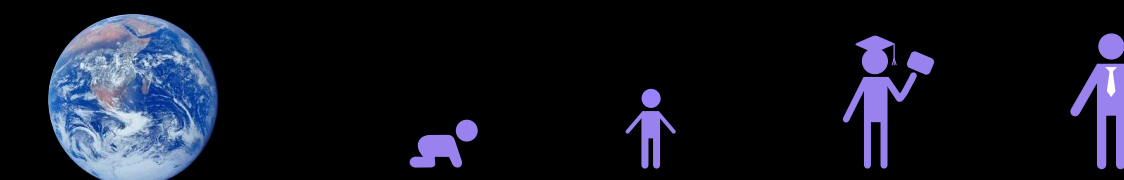


Our Superuniverse has 4 primary galactic jurisdictions designed on a planar 2 dimensional spiral model.



The pattern of 4 primary jurisdictions repeats itself at the smaller Local Universe level, but now switches to a 3 dimensional model of variable shape consisting of aggregations of various cosmic models such as planar solar systems, scattered clusters, and isolated space bodies. The complexity of Local Universes makes them impossible to represent in simple graphical form.

Finally the pattern repeats itself in its smallest expression on Urantia as 4 primary physical planetary jurisdictions designed on a 3 dimensional spherical model, and also in the most amazing way, as the non-dimensional growth process of Man.



SPLIT JURISDICTIONS (concurrency)

Outer Space Zone 4 is of particular interest in that it will have produced, once completed in the far distant future, two additional special types of galaxies. In addition to its regular galaxies which are currently forming, it will also form special Quatrain and Absolutum galaxies. Quatrain galaxies will be formed from the Ultimatum material of the outer casings of the decommissioned Rods of Absolutum, and the Absolutum galaxies from the interior Absolutum material of the same decommissioned Rods. Refer to diagram: THE MASTER UNIVERSE - SPACE RESPIRATION for additional details about the Rods of Absolutum.

The three types of galaxies in the completed Outer Space Zone 4 will showcase the completed perfection of the three levels of experiential Deity — Supreme, Ultimate and Absolute.

Regular galaxies = Supreme (shown in white), will showcase Supreme created perfection.
Quatrain galaxies = Ultimate (shown in red), will showcase Ultimate eventuated perfection. As indicated, Quatrain galaxies will be located in two distinct groupings. First: In the lower half of OSZ 4 will be Quatrain galaxies created as a co-creative act of God the Supreme + God the Ultimate. Second: An outer extension of OSZ 4 impinging on OSZ 5, comprising galaxies created as a co-creative act of God the Ultimate + Consummator of Universe Destiny. These Quatrain galaxies will act as a Havona extension to serve the future Micro Master Universes.
Absolutum galaxies = Absolute (shown in green), will showcase the creative act of the Trinity Absolute. These Absolutum galaxies will act as a Paradise extension to serve the future Micro Master Universes.

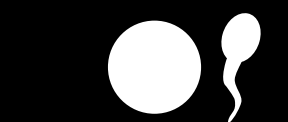
SUPERUNIVERSE 7 — ORVONTON — JURISDICTIONS

- 1) Local Universes
- 2) Minor Sectors
- 3) Major Sectors
- 4) Uversa (HQ)

Superuniverse 7
 HQ Complex

Cross Section View
 (not to scale)

THE 4 OUTER SPACE ZONES ARE THE PRIMARY JURISDICTIONS



OVUM / SPERM
 (I AM / FATHER
 pattern & potential)



FOETUS
 (embryonic stage of
 the Master Universe)



INFANCY



CHILDHOOD



TEENHOOD



ADULTHOOD

MAN AND PATTERN

Refer to diagram:
 PARADISE PATTERNS OF THE MASTER UNIVERSE

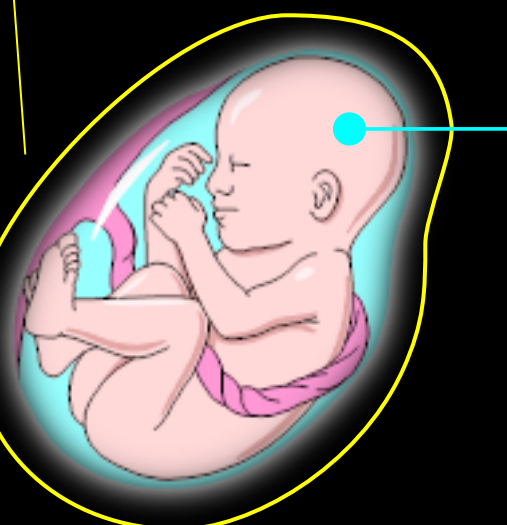
THE SUPERUNIVERSES ARE EMBRYONIC SEPTUPLETS

Not an independant time/space jurisdiction

OUTSIDE THE WOMB
 Mother = Trinity Supreme
 Father - Son - Spirit
 ISLE OF PARADISE

THE WOMB
 The Supreme Being
 HAVONA

INSIDE THE WOMB
 Placenta = Ancients of Days
 Cord = Paradise Creator Sons
 Fluid = Seven Master Spirits
 7 SUPERUNIVERSES



The Supreme Being
 residing in HAVONA
 is the womb